

M105.0

Energy Star Evaporator Fan Motor Sub-Assembly 276E Coca-Cola

03/3/10



Models affected: All Coca-Cola Lean Marketing Venders (LMV), Marketing Machine (CWD – Coke Wave Door), Coke Landscape 276E-Model Venders Produced Beginning Production Run 6332BU and higher (including runs 6317, 6318, 6319, 6324, & 6327). Coke VRV only Venders prior to this will also need a 14 segment display and harness. Non-VRV kits are not available.

Reason: To Provide Step-by-Step Instructions for the removal of the current Evaporator Fan Shroud Assembly and installation of the new Energy Star Evaporator Fan Shroud Assembly. This kit is designed to be installed in venders with installed Environmental Control Kits and S3D Controller E Model electronics. Additional information for the Environmental Control Assembly (642,052,40x.x4) can be obtained from Instruction E011.X or contact your Dixie-Narco Representative or the Technical Service Department.

Safety Precautions!

- Please read these instructions in their entirety before proceeding.
- Ensure that the Electrical Power is disconnected from the Vending Machine by removing Vending Machine Power Cord from the wall outlet.
- Remember use caution working with the Refrigeration Unit parts. These parts may have sharp edges and corners.
- Failure to comply with these instructions could result in injury or electrical shock, which can be serious or fatal.

Order Kit: 646,070,00x.x3 Energy Star Evaporator Fan Motor, Narrow Sub-Assembly

Kit contents:

Part Number	Description	Quantity in Kit
609,050,73x.x3	Housing, Right Evap. 58mm ECM Motor	1
609,050,74x.x3	Housing, Left Evap. 58mm ECM Motor	1
609,050,83x.x3	Shroud, Fan Evap. Narrow EBM Papst	1
609,050,84x.x3	Cover, Evap. Top Narrow 58mm ECM Motor	1
800,902,51x.x1	Clamp, P Nylon Cable 5/16" White	1
803,301,57x.x1	Foam, Poly Strip Self Adhesive	2
80330158	Foam, Poly Strip, Narrow	1
804,501,54x.x1	Assy., Fan Evap. EBM Papst 1850RPM	1
804,926,92x.x1	Choke, Capacitor & MOV 120V	1
80492252	Harness, ECM Evap. Fan Choke Ext.	1
800,304,31x.x1	Screw, 8-18x½ Philip Pan AB Machine	10
900,901,80x.x1	Clamp, P Nylon Cable 1/2"	1
801,100,81x.x1	Rivet, 1/8 Steel Zinc Plate	6
901,901,00x.x1	Tie, Wire 4" Length	1
901,901,36x.x1	Bushing, Evap. Fan Shroud 1" #2210	1
800,304,28x.x1	Screw, 10-32x1¼ Phil Pan Type F	1
M105.x	Energy Star Evap. Fan Motor Sub-Assy. 276E Coke E Model	1

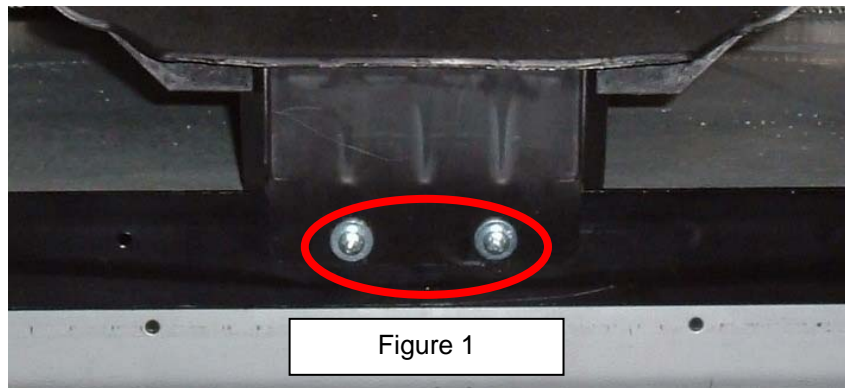
Introduction: Read the entire instructions and verify all the parts of the kit are included before beginning installation. **IMPORTANT:** This kit is designed to work with S3D E Model Control Board (refer to Tech Bulletin 520 for kit numbers if needed) and the Environmental Control Assembly (see Installation Instructions E011.X for kit number if needed). If your vender does not include these parts, they need to be installed prior to installing the Energy Star Evaporator Fan Motor Sub-Assembly. If you have any questions, contact your Dixie-Narco Representative or the Technical Service Department before proceeding with the installation.

Tools Needed: Phillips Screwdriver with #2 nib– preferably with 6” shaft

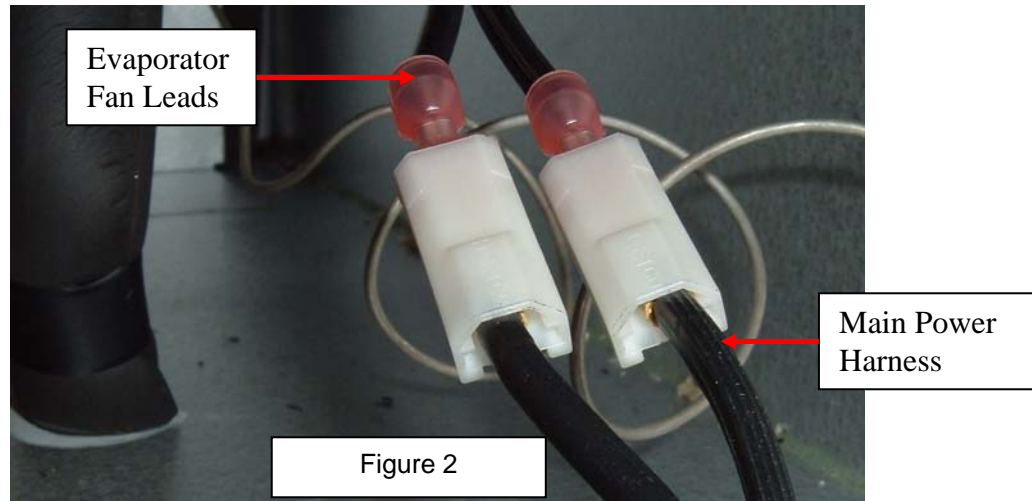
Note: A drill with a magnetic holder will make installation of the kit faster.

Energy Star Evaporator Fan Motor, Wide Sub-Assembly Installation:

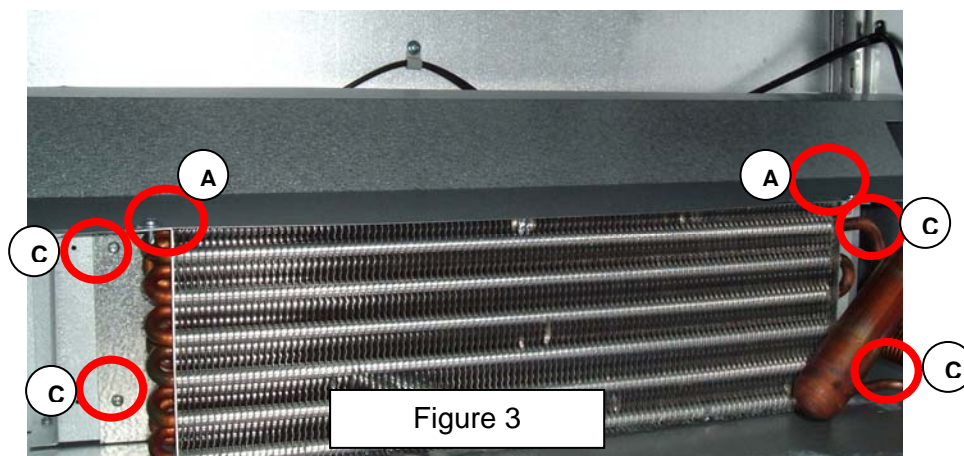
1. Disconnect the Main Power Cord from the Wall Outlet.
2. Open the Main Door.
3. Remove the two (2) Screws from the Can/Bottle Chute (See Figure 1).
4. Remove the Can/Bottle Chute from the vender.



5. Locate and disconnect the Evaporator Fan Leads (See Figure 2) from the Main Power Harness.



6. Remove the two (2) fasteners from the Top Evaporator Cover (Figure 3 marked "A") and discard them.
7. Remove the fasteners securing the Evaporator (Figure 3 marked "C") to the Fan Shroud.



8. Carefully move the Evaporator Counter-clockwise as shown in Figure 4. ***Be careful not to kink or bend the refrigeration tubing.***
9. Remove the screw securing the P Clamp and fan motor (Figure 4 marked "B").
10. Remove the Screws, identified with arrows marked "A" in Figure 4, from the Evaporator Fan Shroud.
11. Carefully remove the Cold Control Sensor, marked "B" in Figure 4, from the Evaporator Fan Shroud.
Important: ***Do not kink or bend Cold Control Sensor Lead.***
12. Remove and discard the old Evaporator Fan Shroud.
13. Remove and discard the old Evaporator Fan.

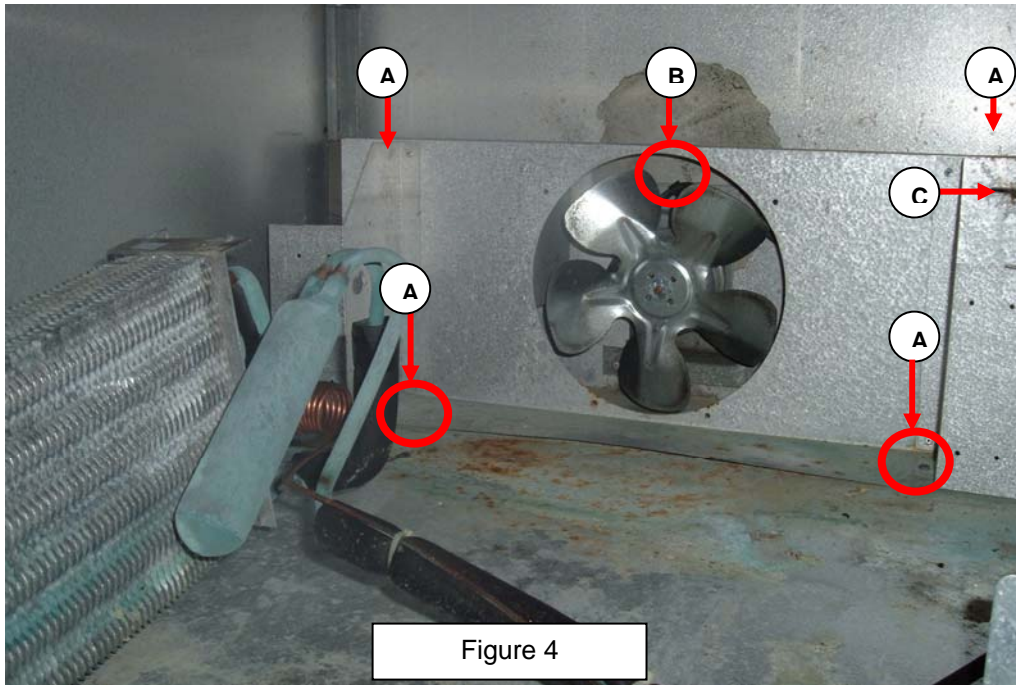


Figure 4

14. Lay the new Evaporator Fan Shroud Assembly on a flat surface as shown in Figure 5.

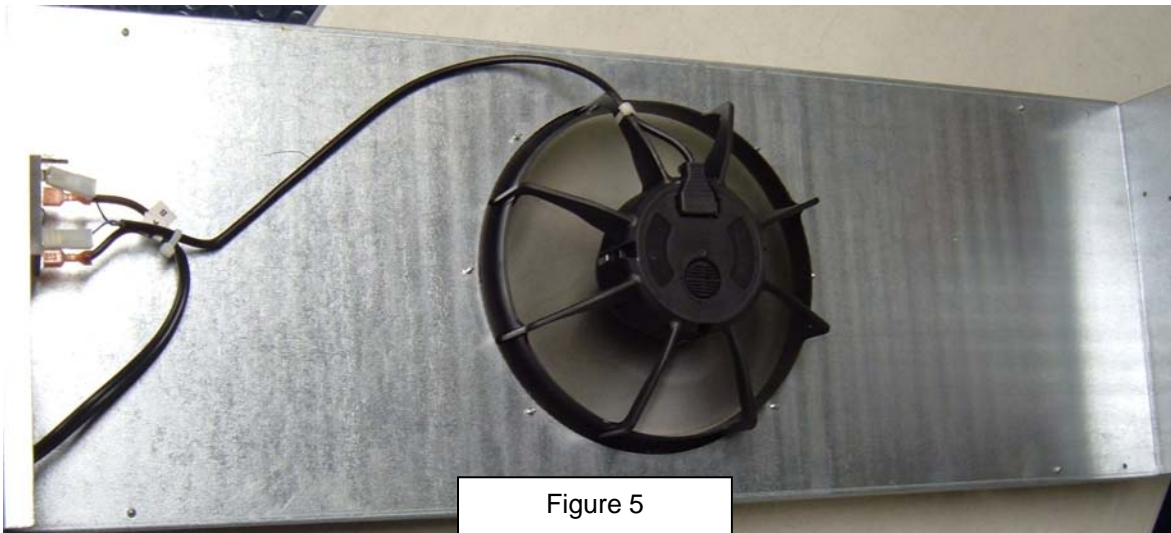


Figure 5

15. Align the male fan connectors to the female fan connectors of the Main Power Harness. When connecting, align the ribbed wires with ribbed wires and smooth wires with smooth wires. Ensure nothing is in the fan blade area.
16. Plug the end of the Power Cord to the Wall Outlet to test the fan assembly. **Warning: Do not touch Fan Blades while they are moving.**
17. The fan will start slowly and increase speed slowly until it reaches peak speed.
18. Disconnect the end of the Main Power Cord from the Wall Outlet.
19. Disconnect the male fan connectors from the female fan connectors of the Main Power Harness.
20. Clean all dirt, debris, and old Fan gaskets from the bottom and back of the Cabinet Tank.
21. Carefully maneuver the new Evaporator Fan Shroud Assembly in the rear of the Cabinet Tank.

22. Center the Evaporator Fan Shroud Assembly in the back of the Cabinet so it rests on the bottom of the Tank.
23. With a drill, secure the Evaporator Fan Shroud Assembly with four (4) new Self Drilling Screws (800,304,18x.x1). See "A" in Figure 6.

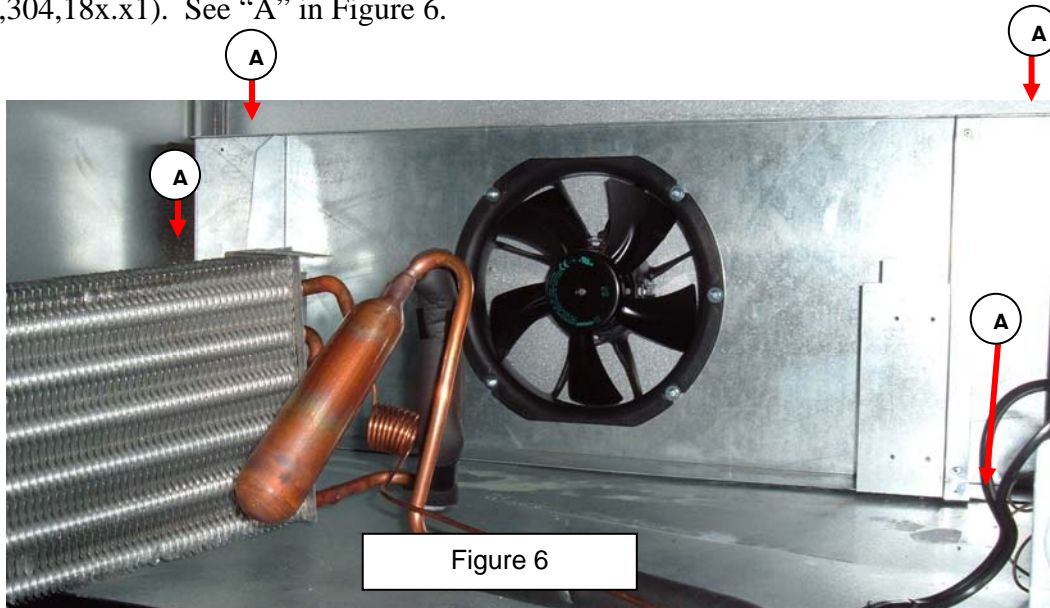


Figure 6

24. Carefully move the Evaporator clockwise to the surfaces of the new Evaporator Fan Shroud.
25. Align the holes of the Evaporator to the holes of the Evaporator Fan Shroud Brackets.
26. Secure with four (4) new Screws (800,304,31x.x1) that were removed in Step #8.
27. Carefully insert the Cold Control Sensor in the slot in the shroud. See Figure 8.
28. Align the male fan connectors to the female fan connectors of the Main Power Harness shown in Figure 7. When connecting, align ribbed wires with ribbed wires, smooth with smooth.

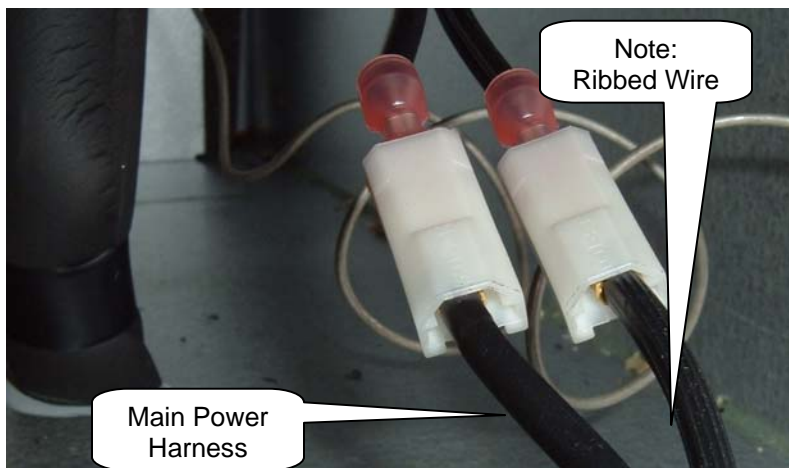


Figure 7

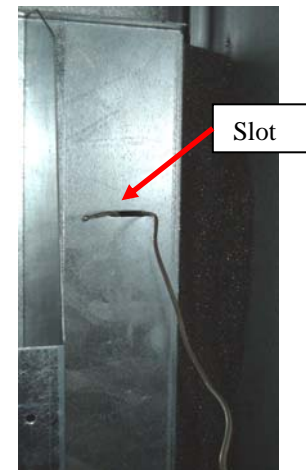
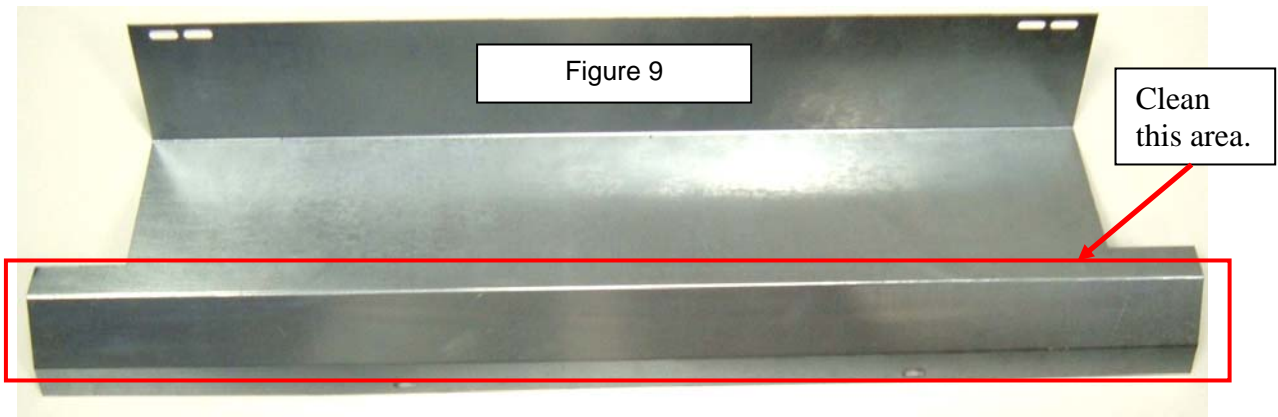
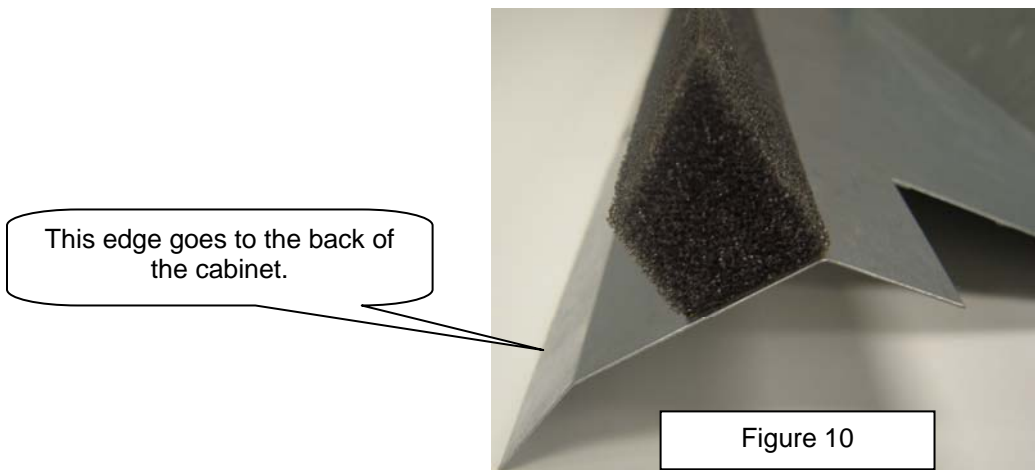


Figure 8

29. Lay the new Top Evaporator Cover (609,050,84x.x3) on a flat surface. Clean the area shown in Figure 9 with a solvent to remove any dirt and oil.



30. Remove the protective paper from the back side of the Foam, Poly Strip Narrow (803,301,58x.x1) and apply gasket to the cleaned area as shown in Figure 10.



31. Lay the new assembly on top of the new Evaporator Fan Shroud.
32. Secure with (2) Tinnerman Clips (800,903,49x.x1), one on each side.
33. Install the Can/Bottle Chute.
34. Secure the Can/Bottle Chute with the two (2) Screws removed in Step #3.
35. Plug in the Main Power Cord to the wall outlet and test new fan for proper operation.